

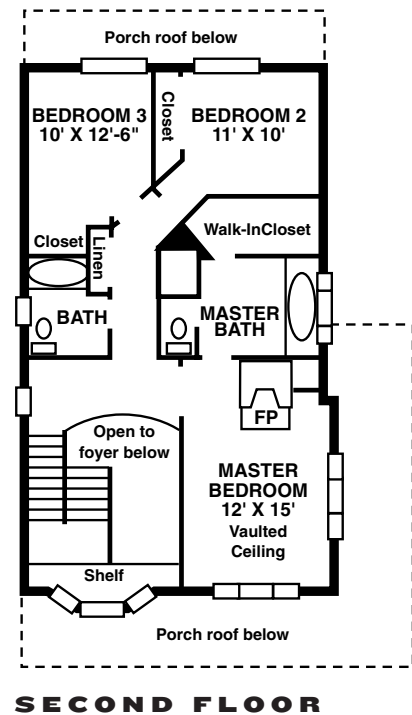
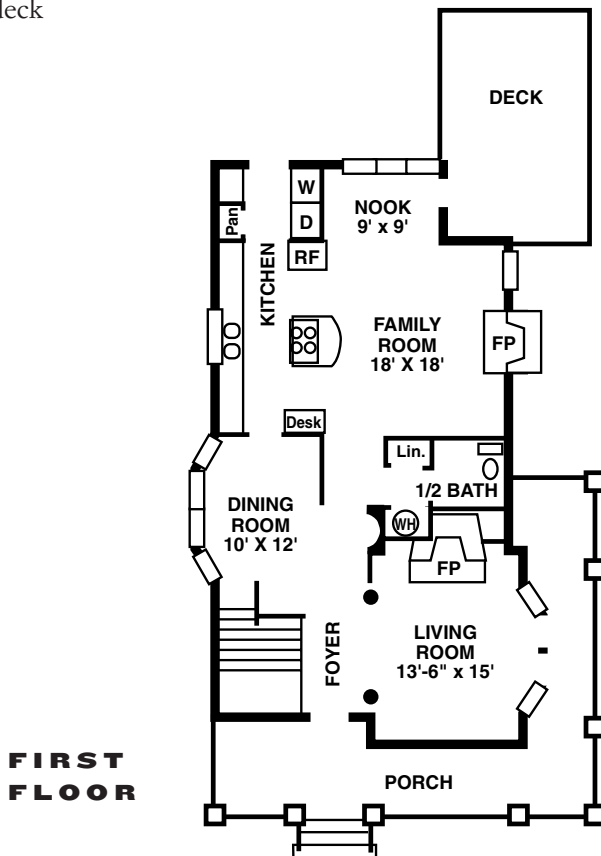
The Saratoga

- Total living area of 2,010 square feet
- 3 bedrooms, 2-1/2 baths
- The charm of earlier years in a corner house with wraparound porch
- Living room features fireplace, built-in bookcases and glass doors to porch
- Kitchen opens to family room with second fireplace
- Third fireplace warms vaulted master bedroom
- Spacious family room includes a breakfast nook
- Large rear deck



NEIGHBORHOOD PLAN

Any Park DuValle builder can build this elegant corner home.



FOR MORE INFORMATION, CALL 515-1979, EXT. 10

Please ask for additional house plans that may be available.

