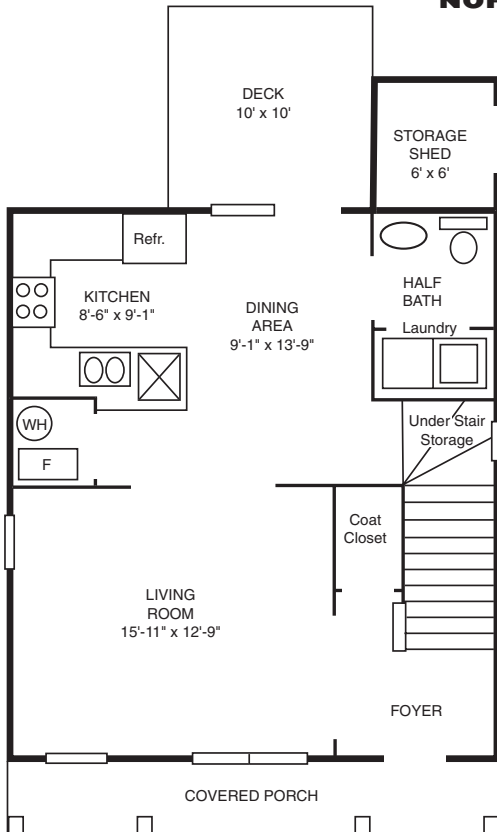


# The New Orleans

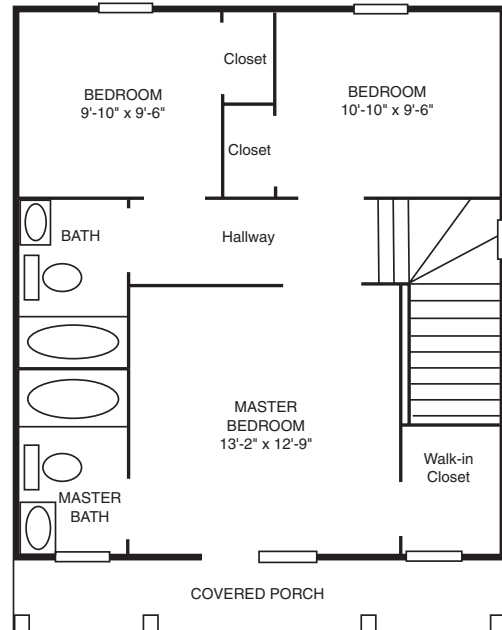
- 1,320 square feet of living space
- 3 bedrooms, 2-1/2 baths
- Open floor plan
- Full-width, columned porches on both floors
- Formal foyer
- Breakfast bar in kitchen
- Large dining area
- Second-floor master suite with doors to upper porch
- Deck
- Storage shed



A southern home built exclusively by  
**NORTHCUTT BUILDERS, INC** for Park DuValle



**FIRST FLOOR**



**SECOND FLOOR**

**FOR MORE INFORMATION, CALL 515-1979, EXT. 10**

Please ask for additional house plans that may be available.