

# The Kaitlyn

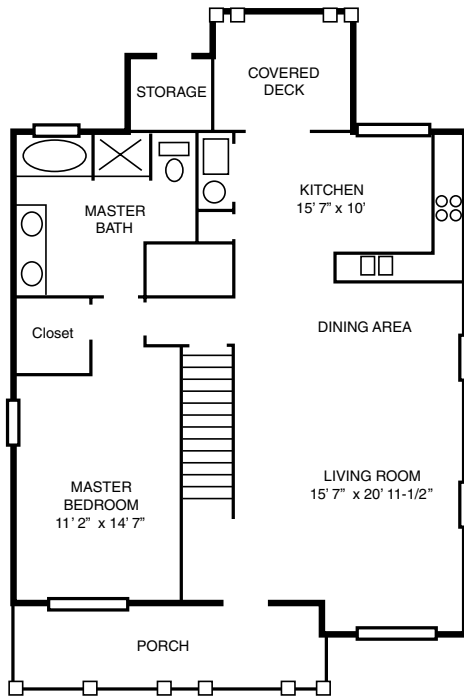
- 2,035 square feet of living space
- 4 bedrooms, 2 baths
- Covered front and rear porches
- Open plan ideal for entertaining
- Large 2-story living room with dining area opening into spacious kitchen
- First-floor master suite with double vanity, whirlpool tub and separate shower in bath
- Upstairs balcony overlooking living room
- Storage shed



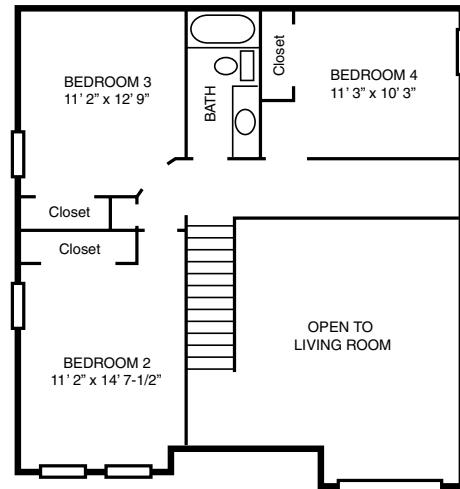
A spacious Victorian home built by **UNITED BUILDERS**.

## The Kaitlyn options

- Vinyl siding or brick exterior



**FIRST FLOOR**



**SECOND FLOOR**

**FOR MORE INFORMATION, CALL 515-1979, EXT. 10**

Please ask for additional house plans that may be available.